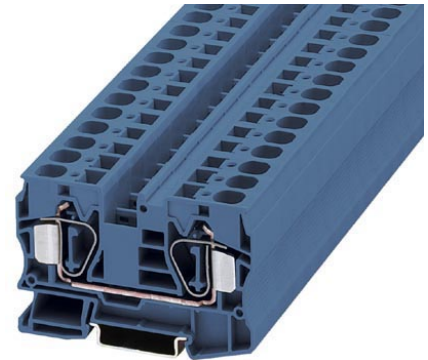


ST 16 BU

Order No.: 3036152



<http://eshop.phoenixcontact.de/phoenix/treeViewClick.do?UID=3036152>

Feed-through terminal blocks with spring-cage connection, cross section: 1.5 mm² ... 16 mm², width: 12 mm, color: blue



Commercial data	
EAN	4017918821081
Pack	50 Pcs.
Customs tariff	85369010
Weight/Piece	0.0377 KG
Catalog page information	Page 59 (CL-2007)

Product notes

WEEE/RoHS-compliant since:
01/01/2003



<http://www.download.phoenixcontact.com>
Please note that the data given here has been taken from the online catalog. For comprehensive information and data, please refer to the user documentation. The General Terms and Conditions of Use apply to Internet downloads.

Technical data

General

Number of levels	1
Number of connections	2
Color	blue
Insulating material	PA
Inflammability class acc. to UL 94	V0

Dimensions

Width	12 mm
Length	80 mm
Height NS 35/7,5	51 mm
Height NS 35/15	58.5 mm

Technical data

Maximum load current	90 A (with 25 mm ² conductor cross section)
Rated surge voltage	8 kV
Pollution degree	3
Surge voltage category	III
Insulating material group	I
Connection in acc. with standard	IEC 60947-7-1
Nominal current I _N	90 A
Nominal voltage U _N	800 V
Open side panel	ja

Connection data

Conductor cross section solid min.	0.2 mm ²
Conductor cross section solid max.	25 mm ²
Conductor cross section stranded min.	0.2 mm ²
Conductor cross section stranded max.	16 mm ²
Conductor cross section AWG/kcmil min.	16
Conductor cross section AWG/kcmil max	4
Conductor cross section stranded, with ferrule without plastic sleeve min.	0.25 mm ²
Conductor cross section stranded, with ferrule without plastic sleeve max.	16 mm ²
Conductor cross section stranded, with ferrule with plastic sleeve min.	0.25 mm ²
Conductor cross section stranded, with ferrule with plastic sleeve max.	16 mm ²
2 conductors with same cross section, stranded, TWIN ferrules with plastic sleeve, min.	1.5 mm ²
2 conductors with same cross section, stranded, TWIN ferrules with plastic sleeve, max.	4 mm ²
Type of connection	Spring-cage connection
Stripping length	18 mm

Internal cylindrical gage	A7
---------------------------	----

Certificates / Approvals

Approval logo



CUL

Nominal voltage U_N	600 V
Nominal current I_N	85 A
AWG/kcmil	16-4

UL

Nominal voltage U_N	600 V
Nominal current I_N	85 A
AWG/kcmil	16-4
Certification	BV, CB, CUL, GOST, LR, NK, UL, VDE-PZI

requested approbations

Certification Ex:	IECEX, KEMA-EX
-------------------	----------------

Accessories

Item	Designation	Description
------	-------------	-------------

Assembly

3036657	D-ST 16	Cover, width: 2.2 mm, color: gray
---------	---------	-----------------------------------

Bridges

3005950	FBS 2-12	Plug-in bridge for cross connections in the bridge shaft, 2-pos., color: Red
3030886	RB ST 16-(2,5/4)	Adapter bridge, for connecting ST-16 spring-cage terminal blocks with ST-2.5 or ST-4 spring-cage terminal blocks

General

0812146	ZB 12,LGS:L1-N,PE	Zack marker strip, printed horizontally: 5-section, L1, L2, L3, N, PE, color: White
---------	-------------------	---

Marking

0807986	WAZ 12	Warning cover, for the operating shafts of the ST "mini-spring" spring-cage terminal block, width: 12 mm, color: yellow
0812133	ZB 12:SO/CMS	Zack marker strip, 5-section, divisible, special printing, marking according to customer requirements
0812120	ZB 12:UNPRINTED	
0810038	ZBF 12:SO/CMS	Zack marker strip, flat, in 12 mm pitch, printed according to customer requirements, 5-section, divisible, color: white
0809735	ZBF 12:UNBEDRUCKT	Zack strip, flat, unprinted, 5-section, divisible, for labeling by the customer

Plug/Adapter

0201731	MPS-IH BK	Insulating sleeve (black), for MPS metal part to be ordered separately (0201744)
0201689	MPS-IH BU	Insulating sleeve (blue), for MPS metal part to be ordered separately (0201744)
0201702	MPS-IH GN	Insulating sleeve (green), for MPS metal part to be ordered separately (0201744)
0201728	MPS-IH GY	Insulating sleeve (gray), for MPS metal part to be ordered separately (0201744)
0201676	MPS-IH RD	Insulating sleeve (red), for MPS metal part to be ordered separately (0201744)
0201715	MPS-IH VT	Insulating sleeve (violet), for MPS metal part to be ordered separately (0201744)
0201663	MPS-IH WH	Insulating sleeve (white), for MPS metal part to be ordered separately (0201744)
0201692	MPS-IH YE	Insulating sleeve (yellow), for MPS metal part to be ordered separately (0201744)
0201744	MPS-MT	Test plug, consisting of: Metal part for 2.3 mm diameter socket hole
3036709	PS-4/E	Individual test plug, for ST and QT terminal blocks, can be labeled with ZBFM 4

Tools

1206612	SZF 3-1,0X5,5	Screwdriver, blade: 1.0 x 5.5 x 100 mm, length 180 mm
---------	---------------	---